

## SUNTOUR BLAZE



### LITE OPERATION POWERING

- 1 REAR DERAILLEUR**  
Model: RD-BE02-SSB  
(Code No. 23879921)
- 2 FRONT DERAILLEUR**  
Model: FD-BE02-SSH  
(Code No. 29239911)  
Clamp-on/28.6mm  
(Code No. 29239913)  
Clamp-on/31.8mm
- 3 SHIFT LEVER (7-SPEED)**  
Model: SL-BE02-B7  
(Code No. 32619841)  
Braze-on  
Model: SL-BE02-C7  
(Code No. 32619842)  
Clamp-on/28.6mm
- 4 SHIFT LEVER (7-SPEED)**  
Model: SL-BE02-CP7  
(Code No. 34129941)  
Stem mount/22.2mm
- 5 FRONT HUB**  
Model: HB-RA01-F  
(Code No. 52979122) 32H/100mm  
(Code No. 52979132) 36H/100mm  
Quick release skewer  
(Code No. 50249192)

- 6 REAR HUB**  
Model: HB-RA01-R  
(Code No. 52979221) 32H/126mm  
(Code No. 52979231) 36H/126mm  
Quick release skewer  
(Code No. 50249196) For 126mm
- 7 FREEWHEEL (7-SPEED)**  
Model: FW-AL10-K7  
(Code No. 15079703)  
Black
- 8 CHAIN**  
Model: CH-AP20  
(Code No. 50690116)  
Black & Black
- 9 CRANKSET**  
Model: CW-BE01  
(Code No. 51719731)  
52T×42T/L=165.0mm  
(Code No. 51719735)  
52T×42T/L=170.0mm

- 10 BOTTOM BRACKET**  
Model: BB-RA01-E  
(Code No. 51019921) English  
Model: BB-RA01-I  
(Code No. 51019923) Italian
- 11 BRAKE LEVER <Dia-compe>**  
Model: BL-BE00-S  
(Code No. 60149911)  
Model: BL-BE00-N  
(Code No. 60149901)
- 12 BRAKE CALIPER <Dia-compe>**  
Model: BA-BE00-S  
F (Code No. 62159001)  
Front/Recessed  
R (Code No. 62159003)  
Rear/Recessed  
Model: BA-BE00-N  
F (Code No. 62159011)  
Front/Recessed  
R (Code No. 62159013)  
Rear/Recessed

## SUNTOUR VX



### LITE OPERATION POWERING

- 1 REAR DERAILLEUR**  
Model: RD-VX02-SSB  
(Code No. 23909921)  
W/O Bracket  
Model: RD-VX02-SSZ  
(Code No. 23909901)  
W Bracket
- 2 FRONT DERAILLEUR**  
Model: FD-BE02-SSH  
(Code No. 29239911)  
Clamp-on/28.6mm  
(Code No. 29239913)  
Clamp-on/31.8mm
- 3 SHIFT LEVER (7-SPEED)**  
Model: SL-BE02-B7  
(Code No. 32619841)  
Braze-on  
Model: SL-BE02-C7  
(Code No. 32619842)  
Clamp-on/28.6mm
- 4 SHIFT LEVER (7-SPEED)**  
Model: SL-BE02-CP7  
(Code No. 34129941)  
Stem mount/22.2mm

- 5 FREEWHEEL (7-SPEED)**  
Model: FW-AL10-K7  
(Code No. 15079703)  
Black
- 6 CHAIN**  
Model: CH-AP20  
(Code No. 50690116)  
Black & Black
- 7 CRANKSET <SR>**  
Model: CW-VX01  
(Code No. 51389801)  
52T×42T/L=165.0mm  
(Code No. 51319803)  
52T×42T/L=170.0mm
- 8 BOTTOM BRACKET <SR>**  
Model: BB-VX01-E  
(Code No. 51039921)
- 9 BRAKE LEVER <Dia-compe>**  
Model: BL-VX00-N  
(Code No. 60159901)

- 10 BRAKE CALIPER <Dia-compe>**  
Model: BA-VX00-N  
F (Code No. 62169001)  
Front  
R (Code No. 62169003)  
Rear



## SUNTOUR RT



### LITE OPERATION POWERING

- 1 REAR DERAILLEUR**  
Model: RD-RT01-SSB  
(Code No. 82249911)  
W/O Bracket  
Model: RD-RT01-SSZ  
(Code No. 82249901)  
W Bracket
- 2 FRONT DERAILLEUR**  
Model: FD-RT01-SSH  
(Code No. 82899911)  
Clamp-on/28.6mm
- 3 SHIFT LEVER (7-SPEED)**  
Model: SL-RT01-B7  
R (Code No. 83149021)  
L (Code No. 83149021)
- 4 FREEWHEEL (7-SPEED)**  
Model: FW-AL10-K7  
(Code No. 15079703)  
Black
- 5 CHAIN**  
Model: CH-AP20  
(Code No. 50690116)  
Black & Black

- 6 CRANKSET <SR>**  
Model: CW-RT00  
(Code No. 51459921)  
52T×42T/L=165.0mm  
(Code No. 51459929)  
52T×42T/L=170.0mm
- 7 BOTTOM BRACKET <SR>**  
Model: BB-VX01-E  
(Code No. 51039921)
- 8 BRAKE LEVER <Dia-compe>**  
Model: BL-RT00-N  
(Code No. 60429901)
- 9 BRAKE CALIPER <Dia-compe>**  
Model: BA-RT00-N  
F (Code No. 62209901)  
Front  
R (Code No. 62209003)  
Rear

Photo/91 TOUR DE FRANCE.



## MICRO LITE



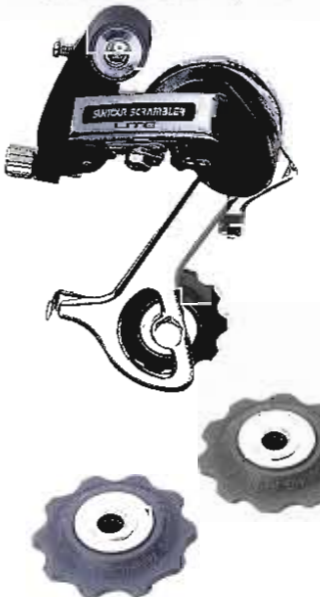
- BOTTOM BRACKET [SUPERBE-PRO]**  
Model: BB-SB20-E  
(Code No. 51099901) English  
Model: BB-SB20-I  
(Code No. 51099903) Italian  
[SL][XC-PRO][MD]  
Model: BB-SL10-E  
(Code No. 51109901) English  
Model: BB-SL10-I  
(Code No. 51109904) Italian

- Specifications
- Features: WTB/SUNTOUR Grease Guard System
  - Taper size: SUPERBE (SUPERBE-PRO) VX (SL)
  - Thread: BC 1.37"×24T(English) 36×24T(Italian)
  - B.B.Width: 68mm(English), 70mm(Italian)
  - Weight: 265g (SUPERBE-PRO) 270g (SL)

## SUNTOUR SCRAMBLER

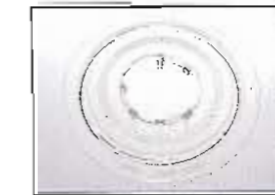
- REAR DERAILLEUR**  
Model: RD-SR21-SSB  
(Code No. 22359921)  
W/O Bracket  
Model: RD-SR21-SSZ  
(Code No. 22359901)  
W Bracket  
Model: RD-SR21-GTB  
(Code No. 22369921)  
W/O Bracket  
Model: RD-SR21-GTZ  
(Code No. 22369901)  
W Bracket  
Model: RD-SR21-GXB  
(Code No. 22379921)  
W/O Bracket  
Model: RD-SR21-GXZ  
(Code No. 22379901)  
W Bracket

- Specifications
- ACCUSHIFT PLUS Compatible
  - Largest rear cog: SS & GT 28T (28mm dropout) GX 32T (28mm dropout)
  - Total gear capacity: SS: 28T (Maximum chainring differential: 12T) GT: 34T (Maximum chainring differential: 18T) GX: 40T (Maximum chainring differential: 20T)
  - Weight: 255g (SS) 275g (GT) 283g (GX)



- SEALED CARTRIDGE BEARING PULLEY SET**  
Model: BP-100  
(Code No. 59999911)  
Specifications

- STAINLESS STEEL INNER CHAINRING**  
Model: CR-ST00  
(Code No. 5150024)  
Specifications



- SPOKE DISC (FOR FREEHUB)**  
Model: FH-SD28  
(Code No. 56170131) For 32H  
(Code No. 56170132) For 36H  
5-3/4" (147mm)  
Model: FH-SD34  
(Code No. 56170141) For 32H  
(Code No. 56170142) For 36H  
7-3/20" (186mm)  
Specifications



- SPOKE DISC (FOR REAR HUB)**  
Model: SD-100  
(Code No. 56170111)  
5-3/4" (147mm)  
Model: SD-110  
(Code No. 56170121)  
7" (176mm)  
Specifications



- BAR-END CONTROL**  
Model: SL-BC01-R7  
(Code No. 31269913)  
Right/Index  
Model: SL-BC01-L  
(Code No. 31269921)  
Left/Power  
Specifications

- VICE GRIPS**  
Model: OT-GP10  
(Code No. 59040703)  
Specifications

- TOP-PULL**

- TOP-PULL**

- TOP-PULL**

- TOP-PULL**

- TOP-PULL**

- TOP-PULL**

- TOP-PULL**

- TOP-PULL**

- TOP-PULL**

- TOP-PULL**

- TOP-PULL**

- TOP-PULL**

- TOP-PULL**

- TOP-PULL**

- TOP-PULL**

- TOP-PULL**

- TOP-PULL**

- COMMAND SHIFTER**  
Model: SL-CD01-R7  
(Code No. 32219911)  
Right/Index  
Model: SL-CD01-L  
(Code No. 32219921)  
Left/Power  
Specifications

- SEAT POST BINDER**  
Model: SB-XP00  
(Code No. 50279903)  
Specifications

- SEAT POST BINDER**

- SEAT POST BINDER**

- SEAT POST BINDER**

- SEAT POST BINDER**

- SEAT POST BINDER**

- SEAT POST BINDER**

- SEAT POST BINDER**

- SEAT POST BINDER**

- SEAT POST BINDER**

- SEAT POST BINDER**

- SEAT POST BINDER**

- SEAT POST BINDER**

- SEAT POST BINDER**

- SEAT POST BINDER**

- SEAT POST BINDER**

- SEAT POST BINDER**

- SEAT POST BINDER**

- SEAT POST BINDER**

- SEAT POST BINDER**

- SEAT POST BINDER**

- SEAT POST BINDER**