

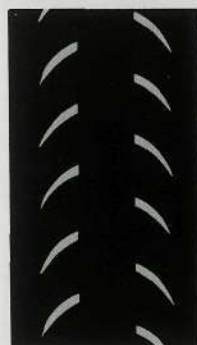


ROAD TIRES

Tom Ritchey has combined years of nationally ranked road racing experience with his innovative and race-winning Vector Force Analysis (VFA) technology to create the world's first road racing tire using VFA. Never before has a road tire so accurately addressed the forces imposed upon it. The result is road gripping traction and a super low rolling resistance that combine to make it the ultimate in road tire performance. The Road Force is standard equipment on the Ritchey Road Race Team bikes, piloted by National and World team riders including Ruthie Matthes and Bobby Julich. Ritchey road tires are available in clincher and tubular models, in a full complement of diameters and widths.

ROAD FORCE

Ritchey hits the road with the world's first Vector Force Analysis road tires, using unique parabolic grooves for superior cornering and a special contour for an ultra low rolling resistance.

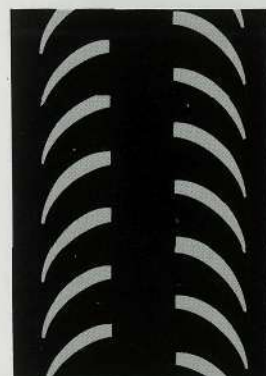


CLINCHER

◆ 700x20c	220 grams	66 tpi
◆ 700x20c Kevlar	180 grams	127 tpi
◆ 700x24c	230 grams	66 tpi
◆ 700x24c Kevlar	200 grams	127 tpi
◆ 700x28c	270 grams	66 tpi
◆ 700x28c Kevlar	220 grams	127 tpi

TUBULAR

◆ 700x21c (120 psi)	250 grams	cotton/latex
---------------------	-----------	--------------



TOM SLICK

One of Tom's team riders named the Tom Slick for the fun you'll have on this serious tire. The Tom Slick combines VFA technology and parabolic directional cuts to make the best smooth rolling tire ever made for MTBs. On the road this tire uses a smooth, low rolling-resistance design down the middle high wear area for improving speed and durability. Start to bank on turns and you'll feel the proven Ritchey design with inverted wedges to catch more of the road's surface area.

◆ 26x1.4	450 grams	60/66 tpi
◆ 26x1.4 Kevlar	360 grams	127 tpi
◆ 700x38c	450 grams	60 tpi



CROSS-BITE

Ritchey's latest in hybrid-fitness tire design. The 700x38 Cross-bite is designed for smooth rolling pavement use and sure-gripping fire road traction. The Cross-bite's inverted "jaw" and overall smooth contour are designed for hard, biting cornering in unstable trail conditions and smooth, fast riding on the pavement.

◆ 700x38c	450 grams	60 tpi
-----------	-----------	--------

PRO "WCS" LATEX TUBES

At 110 grams, Ritchey's NEW Pro Tube (26x1.8~2.1) is the world's lightest. A pair of Pro "WCS" Tubes will save nearly 100 grams of rotating weight in comparison to other light weight latex tubes. Add to that the trusted puncture resistant quality of Latex rubber from an Italian manufacturer of racing tubulars and these tubes genuinely earn the distinction of World Championship Series quality.

◆ 26x1.8~2.1	110 grams
◆ 26x1.9~2.3	130 grams
◆ 700x18~24c	50 grams
◆ 700x24~30c	65 grams
◆ 700x30~38c	80 grams



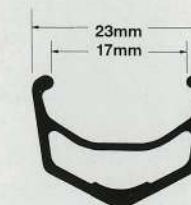
VANTAGE RIMS

Ritchey Vantage rims have become the standard for race-winning performance in rim technology. The trademark "V" cross section provides optimal lateral rigidity and at the same time reinforces the critical spoke area. This design eliminates the need for heavy eyelets, so while the strength of the rim is maximized, the weight of the rim is minimized. The Vantage advantage is a rim that accelerates faster, climbs quicker, and as a result maneuvers on single-tracks with superb agility. That's why Vantage rims were the number one choice of top pros in the 1990 and 1991 race seasons. Ritchey's latest is the exciting light weight Vantage Pro "WCS" MTB rim (395 grams). Also offering a new level of minimal weight, along with improved performance and durability, is the new Vantage Comp Road for the discriminating road rider.

VANTAGE PRO "WCS"

Finally, after five years of rim making experience, Ritchey introduces the Vantage Pro "WCS" Rim, with 395 grams of the finest alloy and construction. A truly responsible 23mm width section that has no equal.

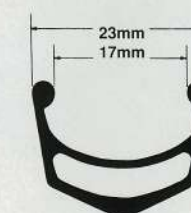
INTENDED USE	◆ pro-class racing, project bikes	WEIGHT	◆ 395 grams
OPTIMUM TIRE	◆ MegaBite Z-Max 2.1, 2.35, Racing K	FINISHES	◆ silver, duranomic grey
DIAMETER	◆ 26"		
DRILLINGS	◆ 28, 32, 36 holes		



VANTAGE COMP

This is the popular rim that in 1989 won the NORBA Worlds, and in 1990 took a silver and two bronze medals in the Pro/Elite Cross-country Worlds.

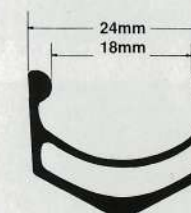
INTENDED USE	◆ competition, high performance, rugged condition use		
OPTIMUM TIRE	◆ MegaBite series tires in 2.0, 2.1, and 2.35	WEIGHT	◆ 415 grams (26")
DIAMETER	◆ 26", 24"	FINISHES	◆ silver, duranomic grey
DRILLINGS	◆ 28, 32, 36 holes		



VANTAGE EXPERT

The original "V" cross section rim, the wider width Vantage Expert is designed for the rigors of rugged off-road use.

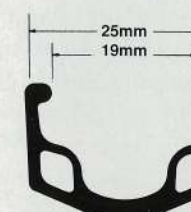
INTENDED USE	◆ performance, rugged condition use		
OPTIMUM TIRE	◆ MegaBite and Force series tires	WEIGHT	◆ 450 grams (26")
DIAMETER	◆ 26", 24"	FINISHES	◆ silver, duranomic grey
DRILLINGS	◆ 28, 32, 36 holes		



VANTAGE SPORT

The Vantage Sport has more features than any other rim at its price. It uses oversize twin side pockets for improved torsional rigidity while retaining the classic Vantage looks.

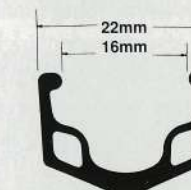
INTENDED USE	◆ sport, touring, rugged condition use		
OPTIMUM TIRE	◆ Force and Quad series tires	WEIGHT	◆ 495 grams (26")
DIAMETER	◆ 26", 24", 20" (BMX)	FINISHES	◆ silver, duranomic grey
DRILLINGS	◆ 32, 36 holes		



VANTAGE CROSS-SPORT

This new rim is a scaled down and narrow version of the popular and affordable Vantage Sport. The Cross-Sport is available in both 700c and 26" diameters.

INTENDED USE	◆ cross-touring, MTB speed wheels		
OPTIMUM TIRE	◆ MegaBite 700c, Quad 1.6, Tom Slick 1.4, and the new Cross-bite	WEIGHT	◆ 500 grams (700c), 450 grams (26")
DIAMETER	◆ 700c, 26"	FINISHES	◆ silver, duranomic grey
DRILLINGS	◆ 32, 36 holes		



VANTAGE COMP ROAD

The new Vantage Comp Road uses the highest quality aluminum and a superior "V" design for added strength.

INTENDED USE	◆ road racing, criteriums, triathlons		
OPTIMUM TIRE	◆ Ritchey Road Force tires	WEIGHT	◆ 420 grams (700c), 380 grams (26")
DIAMETER	◆ 700c, 26" (triathlon)	FINISHES	◆ silver, duranomic grey
DRILLINGS	◆ 28, 32, 36 holes		

