

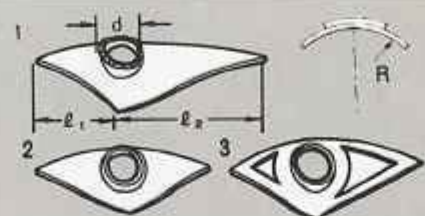
B.B. SHELL PARTS

B1 Wire Lead Tube



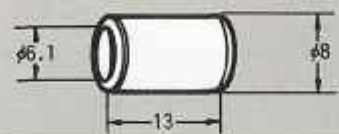
SEAT & CHAIN STAY PARTS

R1 Upper Bridge Reinforcement

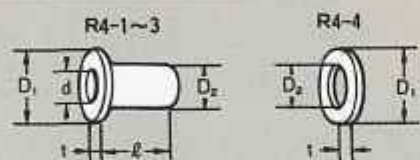


Type	ℓ_1	ℓ_2	d	R
R1-1	18	29	8	6.5
2	17.6	17.6	9	7
3	16	23	9.4	8/7
4	17.6	17.6	9	8

R3 Reinforcement Tube for Upper Bridge

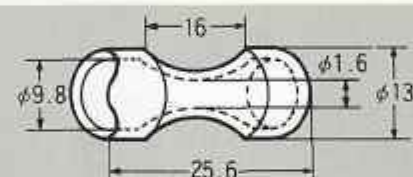


R4 Metal Fitting
(Ground for Brake to Fixed to Upper Bridge)



Type	D	D ₂	d	t	ℓ
R4-1	14	8.0	6.2	1.	13
2	14	8.0	6.2	1.5	15
4	14	8.1		1.5	

R5 Lower Bridge
(Investment Cast)



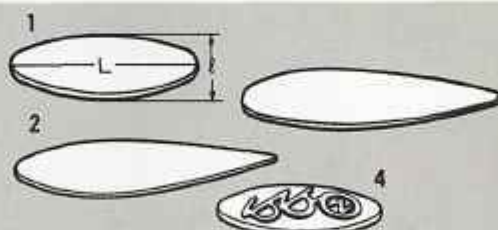
R6 Bracket



R7 Carrier Fixing Board

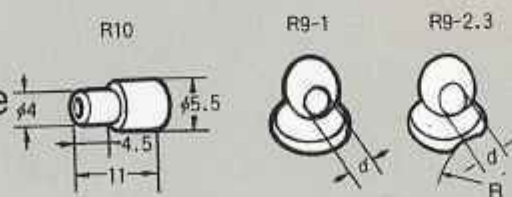


R12 Seat Stay Cap
(Thickness 1.2mm)



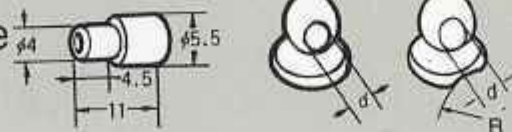
Type	L	ℓ
R12-1	42	16
2	58	15.8
3	55	17.5
4	50 (W/Mark)	17.5

R9 Iron Wire Block Metal Boss



Type	d	R
R ⑨-1	$\phi 4.2$	—
R ⑨-2	$\phi 4.2$	$\phi 14$
R ⑨-3	$\phi 4.2$	$\phi 32$

R10 Brass Outer Receptacle
U/P Iron Outer Receptacle (R9-2-3)



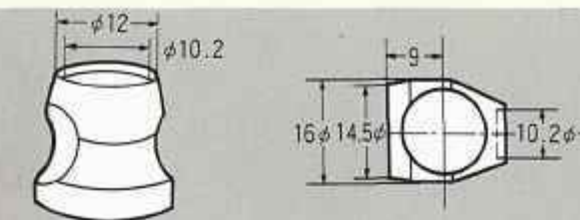
R14 Fitting Bridge Reinforcement



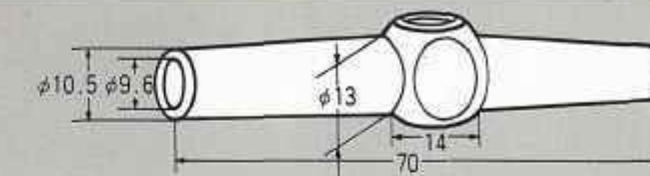
R15 Chain Stay Protector
Synthetic Rubber
Color: Black, Ivory or Brown



R16 Brake Mounting Axle



R17 Bridge
(Investment Cast)



CONTENTS

Creating A New Tradition.....1
 The new performance challenge.....5
 The Tange Decal.....9
 ULTIMATE Frame Tubing Set.....11
 MTB Frame Tubing Set.....13
 Road Frame Tubing Set.....15
 Frame Order System.....17
 • Ultimate Superlight MTB/Ultimate Ultralight MTB/Ultimate Ultrastrong MTB.....19
 • Prestige O.S. MTB/Prestige MTB Concept/Prestige MTB.....21
 • Tange Seamless Cr-Mo MTB/Tange Cr-Mo.....23
 • Prestige O.S./Ultimate Superlight/Prestige.....25
 • Tange Seamless Cr-Mo/Tange Cr-Mo.....27
 • Infinity MTB/Infinity.....28
 Frame Tube Cut Work Illustration.....29
 Seat & Chain Stay Work.....30
 Fork Crown.....31
 End Set.....32
 MTB Front Fork Order System.....33
 MTB Front Fork Components.....35
 Front Fork Order System.....41
 Front Fork Components.....42
 Frame Fitting.....46

